

Cruise SEMINARS

CARDIAC CARE MASTERCLASS

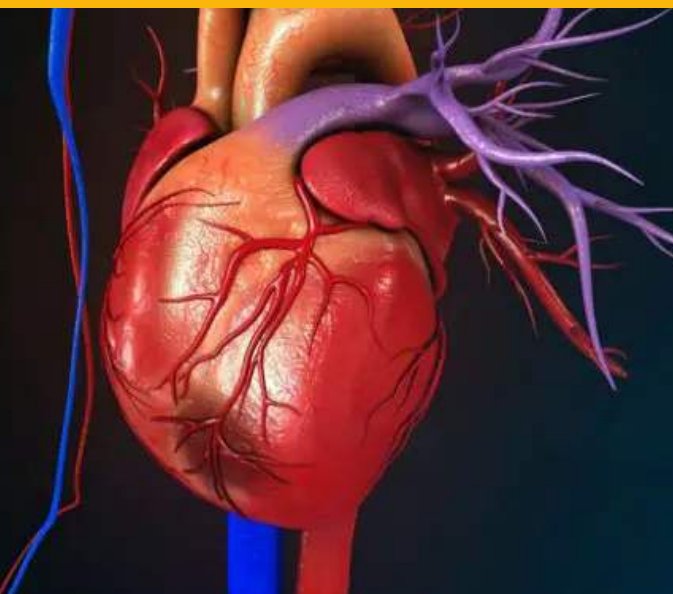
PRESENTED ON BOARD

ROYAL CARIBBEAN INTERNATIONAL
QUANTUM OF THE SEAS

7-NIGHT CRUISE TO THE SOUTH PACIFIC
7 - 14 FEBRUARY 2025

CRUISING FROM BRISBANE

20 CPD HOURS



COURSE OVERVIEW

CARDIAC CARE MASTERCLASS

Cardiac Care Masterclass is designed to provide contemporary knowledge of cardiac care inclusive of acute coronary syndrome, myocardial infarction assessment and management, and ECG interpretation along with the pathophysiology associated with cardiac presentations.

Education sessions include those arrhythmias as a consequence of Right Coronary Artery (RCA) occlusion and Left Anterior Descending (LAD) artery and the septal branch of the LAD artery, leading up to STEMI ECG lead interpretation.

ECG interpretation is prioritised throughout the sessions and supported with case studies and interactive group work activities to promote critical thinking which will be transferable to the care of your patients.

This course is recommended for healthcare professionals including paramedics, and nurses working in medical wards, high dependency units, intensive care, cardiac wards, or emergency departments.








The aim of this course is to increase the participants' cardiac knowledge and ECG interpretation skills. Education sessions include interactive presentations, case studies, and group work.

For detailed information on education sessions in this course, please refer to the following pages.

Learning Objectives

At the end of this course the participant should be able to:

-  Demonstrate the knowledge and skills required to interpret an ECG for patients presenting with common and uncommon cardiac conditions.
-  Apply the knowledge and skills to provide contemporary management for the majority of cardiac patients, and STEMI complications.
-  Demonstrate the knowledge and skills to interpret an ECG for patients presenting with uncommon cardiac arrhythmias and specific cardiac abnormalities of conduction.
-  Interpret ECG changes indicative of Wolff Parkinson White Syndrome, Brugada and Wellens Syndrome.
-  Determine electrolyte abnormalities on an ECG.

CARDIAC CARE MASTERCLASS

Cruise Seminars is delighted to welcome back Bronwyn Seehusen and Joye Hill as presenters for our Cardiac Care Masterclass course. Both Bron and Joye bring a wealth of knowledge and dedication, collectively contributing to this course that promises to be thoroughly educational, interactive, and enjoyable for all participants.



BRONWYN SEEHUSEN

Bronwyn is currently working as a Clinical Nurse Educator at the Tweed Valley Hospital. Bronwyn has continued to teach acute medical, surgical and cardiac nursing skills. She was most recently a Nurse Educator on Norfolk Island which provided Bronwyn with the life skills and experience of remote area nursing.

Her career started in Intensive Care and Coronary Care at the Gold Coast Hospital. Bronwyn's role prior to relocating to Norfolk Island was working in collaboration with co-presenter Joye Hill, as the Gold Coast Cardiac Services Nurse Educator. Bronwyn has a Masters in Learning and Development, a Post-Grad Certificate in Emergency Nursing, and a Post-Grad Certificate in Principles of Emergency Care. She is a current member of ACCCN, CENA, and Cranaplus, and is a CSDS ALS Trainer.

Her career as a Nurse Educator is reflective of her personal values of integrity, respect, and excellence, with the reputation for role modelling and empowering healthcare professionals with the passion for critical thinking and life-long learning.








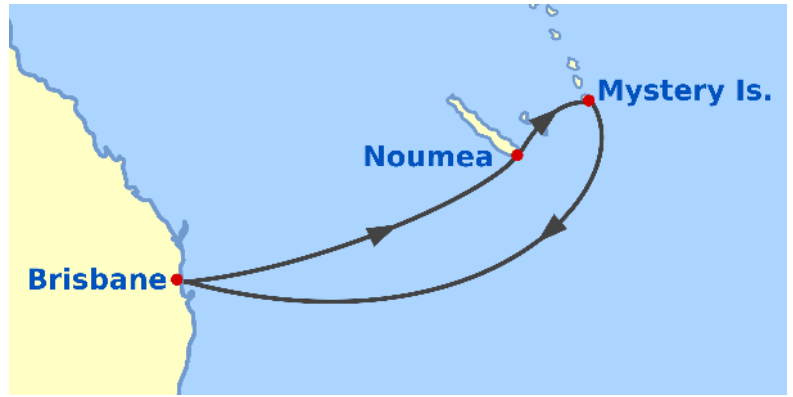
JOYE HILL

Joye is a Clinical Facilitator in coronary care/cardiothoracics at the Gold Coast and enjoys supporting staff with clinical teaching in the acute setting, as well as presenting at ECG/cardiac nursing and advanced life support workshops. Joye has been involved with cardiac nursing for over 30 years, after initially completing midwifery and working in intensive care units. She played an integral part in the development and support of nurse education in a hospital that has grown from a regional hospital, to a tertiary hospital incorporating interventional, electrophysiological, and surgical cardiac services. Her experience also includes cardiac rehabilitation and heart failure management.

A very rewarding part of her nursing practice is simplifying concepts of cardiac nursing and building the confidence of nurses/colleagues to identify "at risk" patients, interpret signs of deterioration and respond appropriately. Empowering staff to be inquisitive, value the contribution of colleagues, support each other to provide the best care in a respectful, compassionate environment is her priority. Joye is a member of ACCCN and has been involved with ACRA previously.

ITINERARY AND EDUCATION SESSIONS

-  **7-14 FEBRUARY 2025**
-  **7 NIGHTS**
-  **QUANTUM OF THE SEAS**
-  **SOUTH PACIFIC**
-  **FROM BRISBANE**



CARDIAC CARE MASTERCLASS

7 FEBRUARY 2025



EMBARKATION & CRUISE SEMINARS REGISTRATION

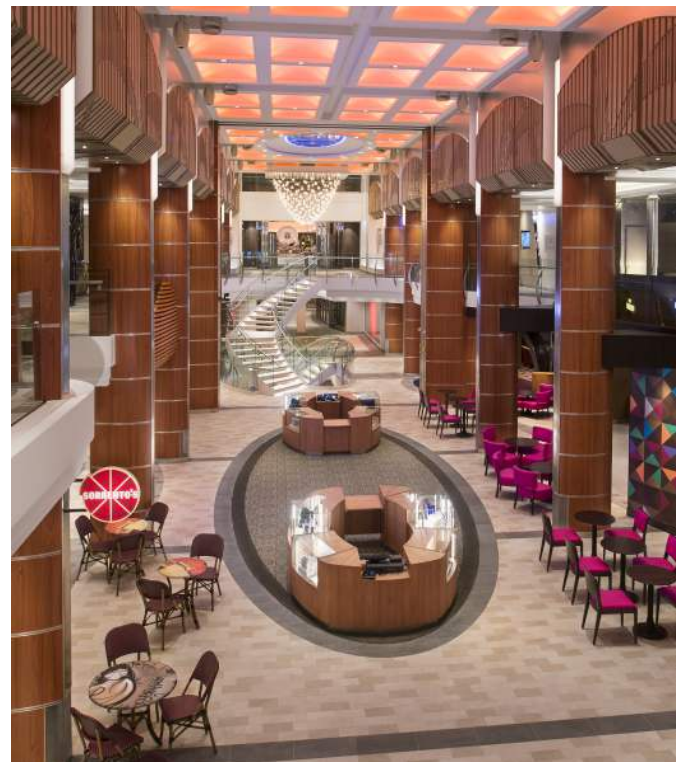
After boarding the ship, meet your Cruise Seminars team at our Welcome Desk to check-in for the course. You'll also receive a complimentary Cruise Seminars tote bag, lanyard, notepad and pen!



QUANTUM OF THE SEAS DEPARTS BRISBANE

It's time to explore this magnificent ship and enjoy our departure from Brisbane. The evening is at your leisure!

Continued over..



8 FEBRUARY 2025



08:30-13:30 EDUCATION SESSIONS 5 CPD
(INCLUDES BREAKS)

WELCOME & INTRODUCTION

Our presenters will commence by getting to know a little about the group before giving a brief overview of the course content that will be presented over the coming days. This course will build upon the pre-reading modules that you'll receive prior to the cruise.

REVIEW PRE-COURSE READINGS

The pre-cruise readings will review cardiac anatomy, physiology, coronary thrombosis, pathophysiology and cardiac electrophysiology with the principles of cardiac conduction as well as how to determine normal sinus rhythm from a 12 lead ECG. Basic arrhythmias originating in the atrium such as atrial arrhythmias, PACs, atrial fibrillation, atrial flutter, paroxysmal atrial tachycardia and junctional arrhythmias will be reviewed as a group.

ARRHYTHMIAS (PART 1)

In this session we will look at some arrhythmias that may occur due to a right coronary artery occlusion. They include sinus bradycardia, sinus arrest, and atrio-ventricular blocks and their management (First-, Second-, and Third-Degree AV blocks).

ARRHYTHMIAS (PART 2)

We'll now look at arrhythmias that may occur due to the occlusion of the Left Anterior Descending Artery (LAD) and the septal branch of the LAD. Examples discussed during this session include sinus tachycardia, bundle branch blocks, left anterior fascicular blocks, and left posterior fascicular blocks. Participants will also be able to differentiate between ventricular tachycardia and supraventricular tachycardia with aberrancy.

MYOCARDIAL INFARCTION ASSESSMENT

This session will describe the definition of myocardial infarction and the specific classifications of myocardial infarction. Group work and case studies will be provided to develop skills to differentiate between unstable angina, NSTEMI and STEMI. Skills will be enhanced to ensure competent assessment of symptoms of ischaemia, whilst recognising ECG changes of ischaemia and infarction.

Participants will be provided with the skills to enable interpretation of a 12-lead ECG of acute coronary syndromes (inferior, anterior and lateral STEMI). The skills of ECG interpretation will be enhanced by group work and interesting case studies.

THE AFTERNOON IS AT YOUR LEISURE!

Continued over..



SELF-DIRECTED LEARNING 1 CPD

A couple of weeks prior to the cruise you will receive pre-course activities to complete at home. Please bring these with on the cruise for discussion during the course. This activity will contribute 1 CPD hour towards the total 20 CPD hours available in this course.

9 FEBRUARY 2025

AT SEA



08:30-13:30 EDUCATION SESSIONS 5 CPD
(INCLUDES BREAKS)



ACUTE CORONARY SYNDROME: PATHOPHYSIOLOGY & MANAGEMENT

In this session, specific conditions of unstable angina, NSTEMI, and STEMI will be discussed, along with an explanation of the pathophysiology of acute myocardial ischemia from coronary thrombosis. The management and re-perfusion therapy will be justified in this session inclusive of PCI and medical management. The session will focus on specific STEMI assessment and management pathways that have been driven by extensive cardiac research.

MECHANICAL & THROMBOEMBOLIC COMPLICATIONS OF MYOCARDIAL INFARCTION

In this session participants will develop the skills to assess and provide appropriate management for patients with complications (mechanical and thromboembolic) associated with acute myocardial infarction and pericardial disease, such as cardiac tamponade and pulmonary embolus. The session will be inclusive of specific ECG criteria for acute pericarditis and pulmonary embolus. Group work sessions will provide critical thinking strategies to prepare for the management of these cardiac complications, such as preparation for pericardiocentesis.

TAKOTSUBO CARDIOMYOPATHY

In this session we will discuss how the diagnosis of takotsubo is determined, and the relevance of this condition.

SPONTANEOUS CORONARY ARTERY DISSECTION

Participants will be encouraged to discuss the differential diagnosis of 'SCAD' - spontaneous coronary artery dissection. The potential causes of this condition and contemporary management of SCAD will also be reviewed.



SELF-DIRECTED LEARNING 1 CPD

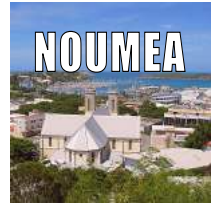
You will be provided with case studies to read and activities to complete at your leisure during the next couple of days. The case studies will be discussed on the next sea day when we re-group.

THE AFTERNOON IS AT YOUR LEISURE!

Continued over..



10 FEBRUARY 2025



NOUMEA, NEW CALEDONIA

Noumea is the capital city of the French territory of New Caledonia and it is one of the largest ports in the South Pacific. It is situated on a peninsula in the south of New Caledonia's main island, Grand Terre, and is home to the majority of the island's European, Polynesian, Indonesian, and Vietnamese populations. The city lies on a protected deep-water harbour which serves as the chief port for New Caledonia. The currency used in New Caledonia is the Pacific Franc (CPF) although Australian Dollars is sometimes accepted.

11 FEBRUARY 2025



MYSTERY ISLAND, VANUATU

Mystery Island is a small, uninhabited island in Vanuatu's Tafea Province. The official name is 'Inyeug' and is located approximately 0.5km from the larger, populated island of Aneityum. The island boasts white sand, snorkelling and swimming opportunities or you could take a leisurely walk around the island (approximately 45 minutes). The island features a grass airstrip, used by the US Military during World War II and is still used by general aviation aircraft today. When cruise ships visit, the locals come across from the larger island of Aneityum to set up huts, selling handicrafts, clothing and souvenirs. Australian currency is accepted here.

Continued over..

Mystery Island, Vanuatu



12 FEBRUARY 2025

AT SEA



08:30-13:30 EDUCATION SESSIONS **5 CPD**
(INCLUDES BREAKS)

CARDIAC EMERGENCIES

Acute pulmonary oedema is a life-threatening emergency. The underlying cause and the relevance of persisting left ventricular failure indicating the severity of the condition will be the main theme of this session.

ACUTE AORTIC DISSECTION ASSESSMENT & MANAGEMENT

The main causes of acute aortic dissection will be presented in this session. The specific assessment criteria utilising the aortic dissection clinical triad will be the focus of this group activity discussion.

HEART FAILURE & CARDIOGENIC SHOCK

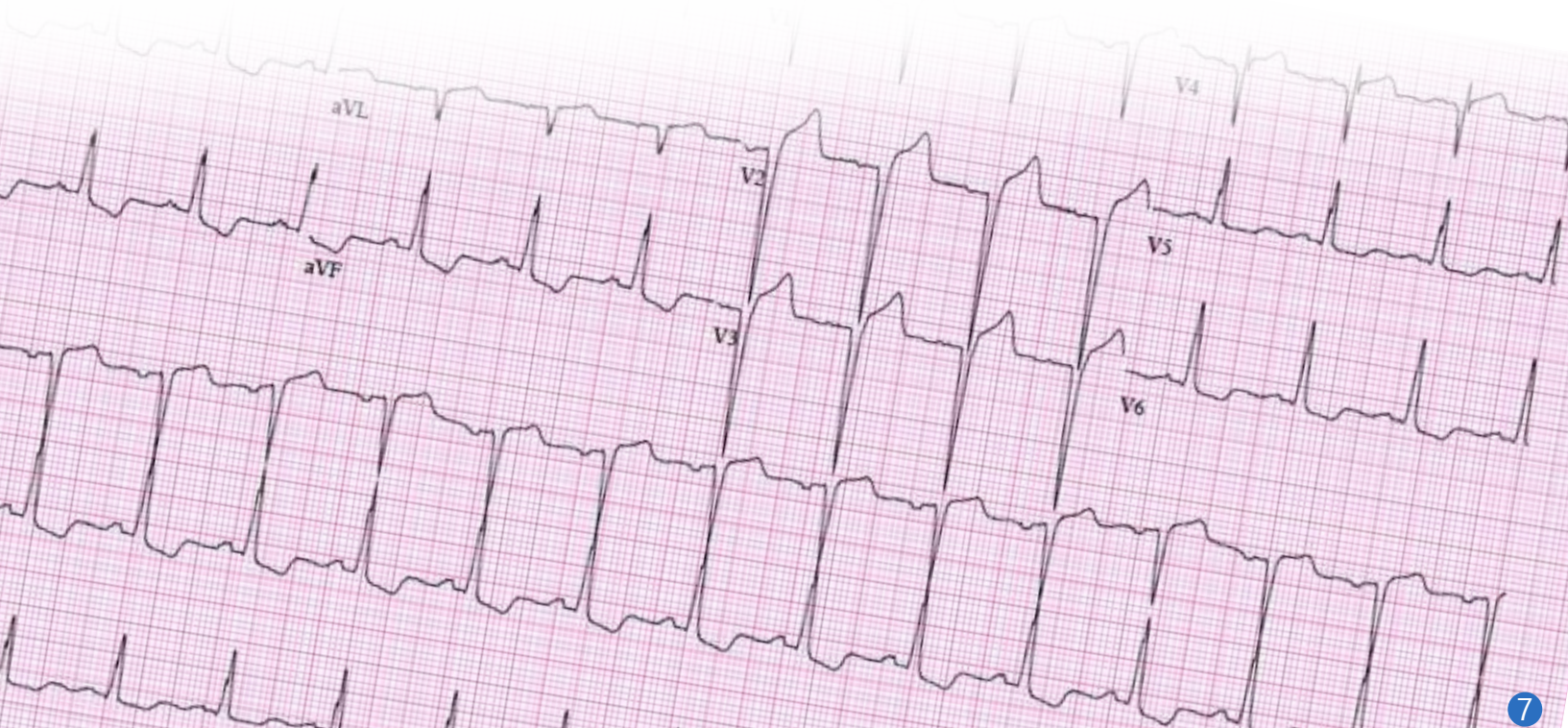
This session will outline heart failure affected by pre-load and after-load and include the differences between left- and right-sided heart failure. The differentiation between acute heart failure and chronic heart failure will also be discussed. Throughout this session there will be examples of general ECG characteristics that are evident with left ventricular hypertrophy, right ventricular hypertrophy and right atrial enlargement.

Participants will be provided with the specific diagnostic criteria and clinical management specific to cardiogenic shock. The session will be inclusive of inotropic and vasopressor agents as a component of the management of cardiogenic shock.

The classification of heart failure criteria will be outlined for participants to develop an awareness of the degree of symptoms and the amount of patient effort required to elicit symptoms which directly correlates with management of the condition.

THE AFTERNOON IS AT YOUR LEISURE!

Continued over..



13 FEBRUARY 2025

AT SEA



08:30-11:30 EDUCATION SESSIONS 3 CPD
(INCLUDES BREAKS)

ADVANCED ECGs & CARDIAC SYNDROMES

Specific case studies will be the theme of this final session of the course. Case studies will be provided and explanations on how to interpret and manage Wolff Parkinson White Syndrome, and how to recognise the ECG characteristics of Brugada and Wellens Syndrome.

ELECTROLYTE IMBALANCES & DRUG TOXICITY EFFECTS

Electrolyte imbalances and drug toxicity can also cause ECG changes. Participants will complete the course with skills to recognise these changes and identify P-pulmonale, P-mitrale, and the significance of U waves.

COURSE CONCLUSION

As we reach the conclusion of the course on this final day of the cruise, your presenters will answer any questions you may have, ensuring that your learning experience has been comprehensive, informative and enjoyable.



14 FEBRUARY 2025



BRISBANE

Welcome back! We trust you have enjoyed this Cruise Seminars event and we wish you a safe onward journey home.



YOUR EDUCATION VENUE: QUANTUM OF THE SEAS



Quantum of the Seas offers guests a variety of unique activities, entertainment and dining options. Discover deck-defying thrills, game-changing entertainment, and endless ways to fill every sea day with unforgettable moments. Experience the North Star for panoramic views 90m above the water, be amazed at the Bionic Bar as robotic arms mix your favourite drink or indulge in mouth-watering food at Jamie's Italian restaurant. Quantum of the Seas has it all!

WHAT'S ONBOARD?*

- Multiple dining options including Jamie's Italian, American Icon Grill, Coastal Kitchen, Chops Grill plus much more!
- More than 7 bars including the Bionic Bar powered by Makr Shkr®, multiple lounges and entertainment venues.
- North Star: Take yourself to new heights with the jewel-shaped capsule that gently ascends over 90 metres above sea level giving breathtaking 360° views of the sea.
- A choice of pools including an adults-only solarium pool - a glass canopied retreat.
- Indoor pool with retractable roof.
- 67-metre outdoor poolside cinema screen.

*Some dining options and activities may incur a fee

FAST FACTS

Decks: 16

Staterooms: 2,090

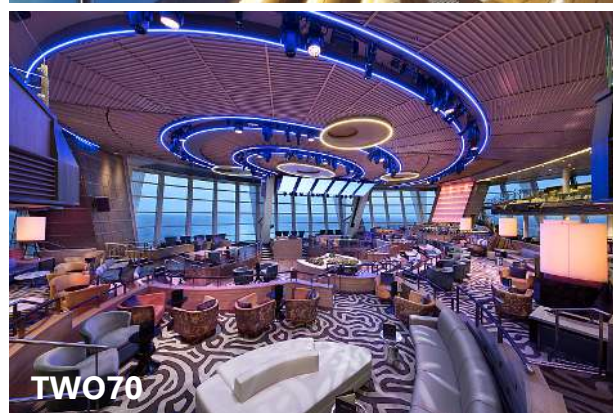
Dining Experiences: 21

Pools: 2 indoor, 2 outdoor

Length: 348m / 1,142ft

Tonnage: 168,666 GRT

Cruising Speed: 22 knots



COURSE REGISTRATIONS & CRUISE BOOKINGS

Quantum of the Seas offers a comprehensive selection of stateroom categories, ensuring a diverse array of choices to accommodate varying preferences, needs, and budgets. Choose an inside room for the best value, an ocean-view room for panoramic vistas, or indulge in a balcony room or suite and relax in your own private sitting area.

Yes! You may bring your family and friends. Guests who are not participating in the course only pay the cruise fare component.

REGISTER & BOOK IN 3 EASY STEPS

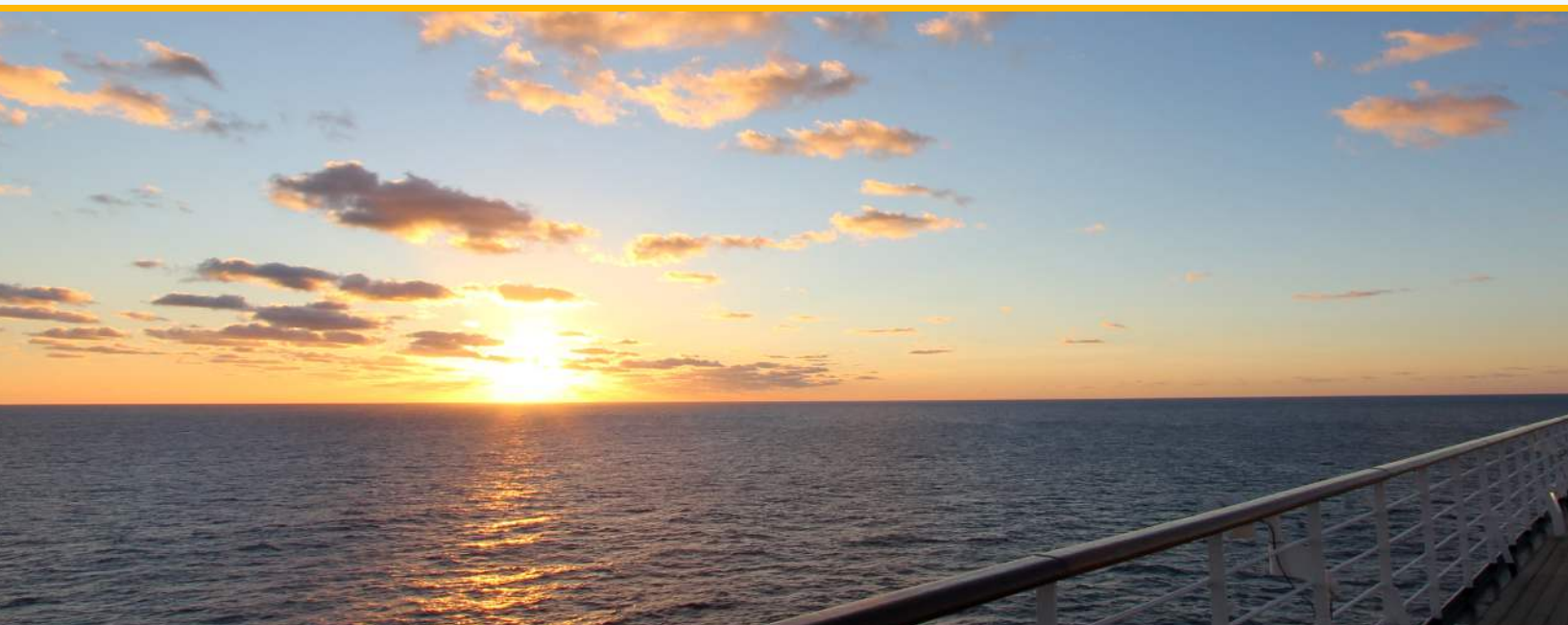
- 1** Visit Cruise Seminars at cruiseseminars.com.au
- 2** Locate the course in the Events menu then click the Booking Request button to enter your details.
- 3** You'll be contacted by Christie Gowan from TravelManagers to assist with your cruise booking. A separate invoice will be provided by Cruise Seminars for the course fee.*

..OR SCAN TO BOOK!



Milford Sound, New Zealand

Photo: Greg Schechter



Provided by

Cruise SEMINARS
cruiseseminars.com.au



Cruise bookings facilitated by

TravelManagers
As individual as you are



0407 626 480

Christie Gowan

*The cruise must be booked through Christie Gowan at TravelManagers. A separate invoice will be provided by Cruise Seminars for the course fee. Cruise cabins and seats in the course are limited and subject to availability. Terms and Conditions apply. Cancellation penalties may apply. Refer to website for details. Information in this brochure correct at time of publishing and is subject to change without notice.