

Cruise SEMINARS

THE DETERIORATING PATIENT

Detection, Assessment and Treatment

PRESENTED ON BOARD

Royal Caribbean International
OVATION OF THE SEAS

9-Night Cruise to the South Pacific
4 - 13 NOVEMBER 2024



20 CPD HOURS



THE DETERIORATING PATIENT

Detection, Assessment and Treatment

Overview

Cruise to the beautiful South Pacific islands on board Royal Caribbean International Ovation of the Seas while participating in our CPD course: **The Deteriorating Patient – Detection, Assessment and Treatment**. This popular course will be presented by a team of dedicated healthcare professionals, providing an exceptional and unique education experience for all.

A deteriorating patient is often preceded by observable physiological and clinical abnormalities. This course will cover many aspects of common medical emergencies including the most effective way to detect, assess and treat them while also escalating care appropriately.

This course is recommended for GPs, nurses and paramedics and will provide the participant with the required knowledge and skills to manage a deteriorating patient. Education sessions will include interactive presentations, case studies and simulations.



This is an RACGP-approved CPD activity under the RACGP CPD Program (Activity ID 408253)



This is an ACRRM-approved CPD activity under the ACRRM CPD Program

Learning Outcomes

At the end of this course the participant should be able to:

- Identify and assess a deteriorating patient using a structured ABCDE approach.
- Implement the appropriate management of a deteriorating patient.
- Summarise the importance of the early detection, assessment and treatment of a deteriorating patient.
- Outline the importance of teamwork, leadership and communication during a medical emergency.

MEET YOUR EDUCATION TEAM

Introducing your education team for the Deteriorating Patient course. Our faculty consists of highly accomplished, dedicated healthcare professionals who together will bring their knowledge and experience to ensure a thoroughly educational, interactive and enjoyable experience for all.



GAIL FORREST BN, MResEd, GradCertHEd, GradCertHSM (Safety & Quality)

Gail is an experienced leader and educator in interdisciplinary healthcare education. Her experience in health care education spans more than two decades and involves multi-professional education across a variety of tertiary higher education and clinical health sector settings. Gail is passionate about improving the quality and safety of patient care through developing and delivering excellence in clinical education and believes in creating a culture of learning in healthcare. Gail has worked in a variety of critical care settings including Emergency, ICU, and CCU and is an Instructor and Course Director for the Australian Resuscitation Council. Gail currently works as Associate Director Clinical Education Strategy, Research and Evaluation at the Health Education and Training Institute, NSW Health.



COLETTE FOUDY BNProfHons, MClInNurs, Cert IV Education & Teaching

Colette is a Critical Care Nurse Educator at St George Private Hospital Sydney and has 25 years critical care experience in Australia and the UK. Within this role she has been responsible for the development and implementation of education programs including Critical Care Nursing Foundation, NSQHS Standard 8 Recognising and Responding to Acute Deterioration education, Basic and Advanced Life Support and Resus4Kids. Colette is an experienced Australian Resuscitation Council Course Director, regularly teaching BLS, ALS1 and ALS2 courses. Colette is passionate on educating staff of the early detection and management of clinical deterioration to improve patient outcomes. In her current role as ICU Educator, Colette is also able to positively influence clinical practice at the bedside and is a fierce advocate for patient-centred care.



DR MERRIN THANOPOULOS MBBS (Hons1)

Merrin is the Emergency Care Coordinator at the Mater Hospital North Sydney where she has also worked as a Senior Ward Registrar for the past fifteen years. Prior to that, she was a senior RMO in St Vincent's Hospital Emergency in Darlinghurst for ten years. Within her role at the Mater she is responsible for the implementation of NSQHS Standard 8 (Recognising and Responding to Acute Deterioration). This has involved education and training sessions with nursing and medical staff, review of all patient deteriorations within the Mater Hospital and conducting Resus4Kids courses. She is also an experienced ALS-1 and ALS-2 Instructor and Course Director with the Australian Resuscitation Council and was responsible for the development of the Mater Hospital ALS Course Centre.



KATE PYWELL BN (ACU), GradDipAcuteCare (UTS)

Kate has worked in Critical Care specialties throughout her extensive nursing career. Over the last 25 years she has held the roles of CNS, CNE & Acting NUM in the Mater Hospital ICU, and now is a Clinical Nurse Educator for PACU within the Mater Hospital Operating Theatres. For the past 8 years, Kate has worked as an instructor with the Australian Resuscitation Council regularly providing ALS-1 and ALS-2 courses to medical professionals. Over the years Kate has contributed to improving patient safety through the development and implementation of various quality improvement policies and teaching. In her current role Kate is able to positively influence clinical practice at the bedside and is a passionate advocate for patient-focused care and support of new graduate nurses transitioning into the workforce.



MIKE RISTUCCIA BClinPrac(Paramedic)

Mike is a former Intensive Care Paramedic with the NSW Ambulance where he was employed for 27 years. He is now responsible for coordinating all of the courses for Cruise Seminars and is your onboard event manager. Mike's role is to organise all aspects of the course, right down to the smallest detail, ensuring your Cruise Seminars event is enjoyable, educational and memorable. Mike is always available to chat during the cruise and with over 40 cruises under his belt, he enjoys sharing his hints and tips on cruising, what to do ashore or where to cruise to next!

ITINERARY AND EDUCATION SESSIONS

THE DETERIORATING PATIENT

Detection, Assessment and Treatment

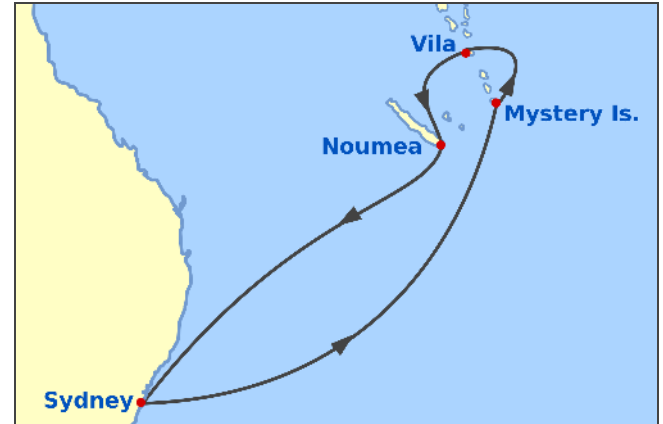
Presented on board

Royal Caribbean International

OVATION OF THE SEAS

9-Night Cruise to the South Pacific

4 - 13 NOVEMBER 2024



4 NOVEMBER 2024 (MONDAY)

SYDNEY



EMBARKATION & CRUISE SEMINARS CHECK-IN

After boarding the ship, meet your Cruise Seminars team at our Welcome Desk to check-in for the course. You'll also receive a complimentary Cruise Seminars tote bag, lanyard, notepad and pen!



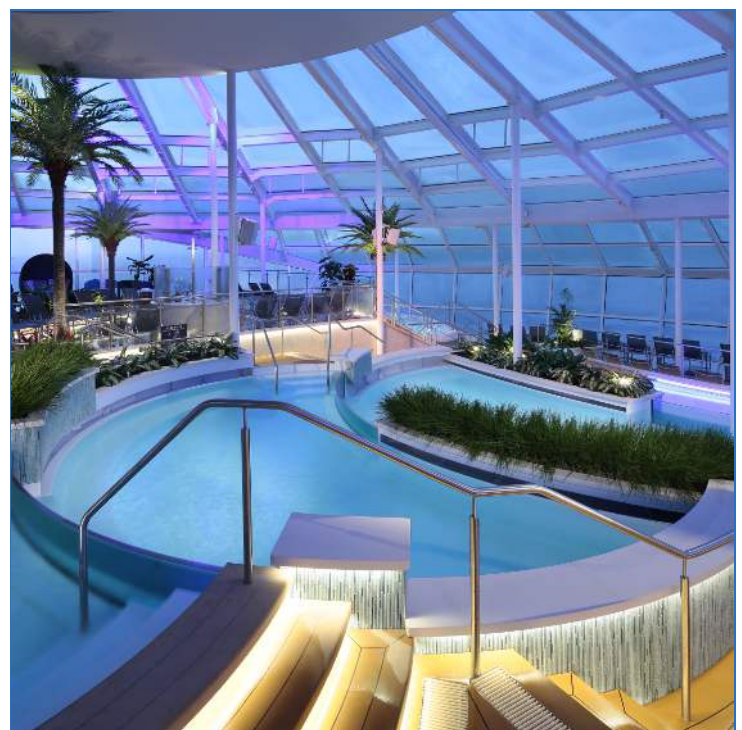
18:45 OVATION OF THE SEAS DEPARTS SYDNEY

It's time to explore this magnificent ship and enjoy our departure from Sydney. The evening is at your leisure!

Continued over..



Ovation the Seas Conference Room



Adults-only Solarium



09:00-12:00 MORNING EDUCATION SESSIONS **3 CPD**



WELCOME & INTRODUCTION

Our presenters will commence by introducing themselves before getting to know a little about you. A brief overview of the course content over the coming days will also be given.

'BETWEEN THE FLAGS' - RECOGNISING PATIENT DETERIORATION

Patients in hospital and community settings can deteriorate unrecognised and without an adequate response. Between The Flags has been in use since January 2010 which uses vital sign thresholds for staged escalation and response by the most appropriately trained clinicians. This idea of early recognition of deterioration came from the pioneering work of Professor Ken Hillman, who developed a simple, but innovative system at Liverpool Hospital, NSW in the late 1980s.



MORNING TEA BREAK



THE A-E APPROACH TO A DETERIORATING PATIENT

The A-E assessment is a simple method that allows for a structured approach to a deteriorating patient. In this session we will take you through this assessment showing how abnormalities are detected, prioritised and treated.

TEAMWORK, COMMUNICATION AND LEADERSHIP

Poor teamwork and communication are a factor in up to 80% of adverse or near-miss events in hospitals. These deficiencies are often highlighted during medical emergencies. Structured communication tools, rapid response systems, patient/family activated care are vital in ensuring our patients receive the most appropriate care. In this session we will explore the concepts of teamwork and communication with a game, watching a short documentary and then discussion.



12:00-13:00 LUNCH

13:00-15:00 AFTERNOON EDUCATION SESSIONS **2 CPD**



CARDIAC MONITORING & ECG ANALYSIS

This session will take you through the indications for cardiac monitoring, how to monitor the ECG effectively, basic physiology of the ECG and the 6-stage approach to ECG interpretation.

ACUTE CORONARY SYNDROME

In this session, we'll look at the processes that causes acute coronary syndrome (ACS). Included in this discussion will be the different types of ACS, recognising and assessing a patient with ACS, and the relevant and immediate treatment regimens for different types of ACS.



PRE-CRUISE READINGS **2 CPD**

Prior to the cruise you will be provided with case studies to read and activities to complete. The case studies will be discussed during the Coroner's Cases session later in the course. This activity will contribute 2 CPD hours towards the total 20 CPD hours available in this course.



09:00-12:00 MORNING EDUCATION SESSIONS 3 CPD



SEPSIS

What is sepsis and septic shock? We'll discuss why sepsis is dangerous and how to identify these patients using the A-E Approach. Included in this session is a discussion on 'The Sepsis Six' and why they are important.

DELIRIUM

Delirium is a medical emergency and is often multi-factorial in origin. We will look at the common causes of delirium, how to investigate it, and discuss several relevant case studies.



MORNING TEA BREAK



ASTHMA

Asthma is a common condition in Australia. In this topic, we'll look at assessing and treating a patient with asthma and recognising the signs and symptoms of acute, severe, life-threatening asthma. We'll also discuss the reversible causes of a cardiac arrest due to severe asthma.



12:00-13:00 LUNCH

13:00-15:00 AFTERNOON EDUCATION SESSIONS 2 CPD



STATUS EPILEPTICUS

Continuous or recurrent seizures are a medical emergency and need to be detected and treated quickly to prevent brain injury and death. We will look at the different ways seizures may present, the causes behind them and complications from prolonged seizure activity.

OLIGURIA IN THE DETERIORATING PATIENT

Falling urine output can be an early sign of clinical deterioration. We will look at why this occurs, what measures to put in place to detect it and how to avoid further deterioration.

EVENING (TIME TBA)



CRUISE SEMINARS COCKTAIL PARTY!

Join us for an exclusive and complimentary cocktail party, for all course participants! Beverages served include alcoholic and non-alcoholic, courtesy of Cruise Seminars!

7 NOVEMBER 2024 (THURSDAY)



MYSTERY ISLAND, VANUATU

Mystery Island is a small, uninhabited island in Vanuatu's Tafea Province. The official name is 'Inyeug' and is located approximately 0.5km from the larger, populated island of Aneityum. The island boasts white sand, snorkelling and swimming opportunities or you could take a leisurely walk around the island. When cruise ships visit, the locals come across from the larger island of Aneityum to set up huts, selling handicrafts and clothing.

Mystery Island, Vanuatu



8 NOVEMBER 2024 (FRIDAY)



VILA, VANUATU

Port Vila is the capital and largest city of Vanuatu, located on the island of Efate. Cruise passengers often enjoy visiting the local markets that sell a variety of goods such as fruit and vegetables. Optional day trips from Vila include the popular Cascade Waterfalls, Hideaway Island and the Ekasup Cultural Village.

9 NOVEMBER 2024 (SATURDAY)

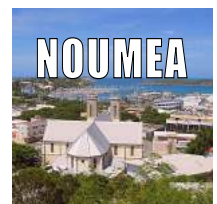


AT SEA

Today is at your leisure! Why not take a dip in one of the pools, experience the North Star* or just have a relaxing day at sea? Whatever you choose to do, we hope you have a wonderful day.

*Some optional activities may attract a fee.

10 NOVEMBER 2024 (SUNDAY)



NOUMEA, NEW CALEDONIA

Noumea is the capital city of the French territory of New Caledonia and is one of the largest ports in the South Pacific. It is situated on a peninsula in the south of New Caledonia's main island, Grand Terre, and is home to the majority of the island's population. The city lies on a protected deep-water harbour, serving as the chief port for New Caledonia.

Continued over.. **6**



09:00-12:00 MORNING EDUCATION SESSIONS 3 CPD



CORONER'S CASES

Every hospital-based death referred to the State Coroner's courts has been found to have at least one of the following four issues contributing to the death: Vital signs not checked at the appropriate frequency; abnormal vital signs not acted upon; patient/family concern ignored and poor documentation. We will review cases and discuss important lessons to be learnt from each one.



MORNING TEA BREAK

ACUTE STROKE

Prompt detection, assessment and transfer of a patient to an appropriate facility provides the best outcome for a suspected stroke. We will discuss the different ways that strokes may present and cases where the outcome was clearly linked to the escalation of appropriate care.



12:00-13:00 LUNCH

13:00-15:00 AFTERNOON EDUCATION SESSIONS 2 CPD



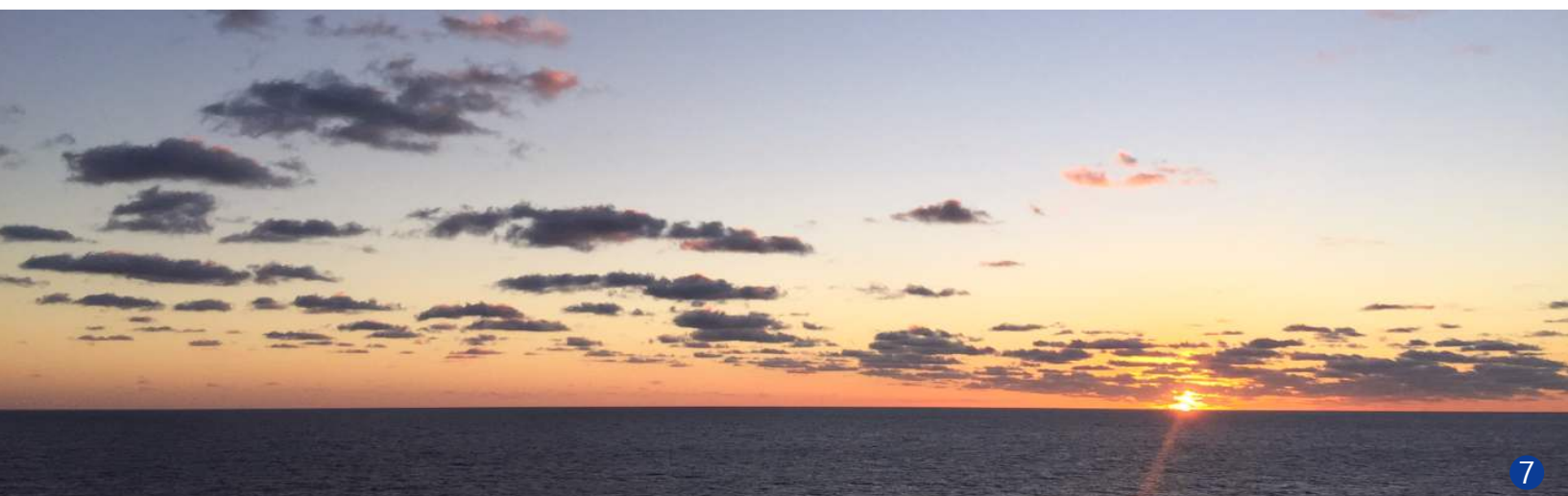
ARTERIAL BLOOD GAS ANALYSIS

In this session we will discuss the terms used to describe arterial blood gas analysis and its role in the deteriorating patient. A simple approach to the interpretation of blood gases will be presented in the context of common clinical presentations.

ADVANCED LIFE SUPPORT THEORY

After a cardiac arrest, only two interventions have been shown to increase survival to discharge from hospital - high quality CPR and early defibrillation. In this presentation we will run through the latest Australian Resuscitation Council guidelines for confirmation of arrest, external cardiac compressions, ventilation, defibrillation and emergency drugs. Please note this discussion is not intended to replace a full Advanced Life Support course.

Continued over..



12 NOVEMBER 2024 (TUESDAY)

AT SEA



09:00-12:00 MORNING EDUCATION SESSIONS 3 CPD



ANAPHYLAXIS

We'll identify anaphylaxis using the A-E Approach and the importance of calling for help, along with the definitive first-line management with IM adrenaline. We'll also demonstrate correct and safe use of the Epipen™ and participants will be given the opportunity to practice using this device.



MORNING TEA BREAK

SHOCK

Shock is a clinical state with characteristic signs and symptoms which occurs when there is an imbalance between tissue oxygen demands and supply. Regardless of the cause, shock has a universally poor outcome unless it is detected early and treated appropriately and aggressively. We will look at and discuss the different causes of a shocked state and treatment guidelines.



BETWEEN THE FLAGS - 12 YEARS IN PRACTICE

We earlier looked at the theory of 'Between the Flags' and now we'll see how it works in practice. Data from the Mater Hospital at North Sydney will be presented which will show how the implementation of Between the Flags has markedly improved a deteriorating patient's outcome.

CONCLUSION

We'll close with a brief summary and answer any questions you may have about the course.

The afternoon is at your leisure!



13 NOVEMBER 2024 (WEDNESDAY)

SYDNEY



ARRIVAL IN SYDNEY

We trust you have enjoyed this Cruise Seminars event. We wish you a safe onward journey home and look forward to welcoming you back on board another time.

YOUR EDUCATION VENUE - OVATION OF THE SEAS



Marvel at one of Royal Caribbean International's newest ships - Ovation of the Seas. Completed in 2016, the Ovation of the Seas offers guests a variety of unique activities, entertainment and dining options. Experience the North Star for panoramic views 90m above the water, be amazed at the Bionic Bar as robotic arms mix your favourite drink or indulge in mouth-watering food at Jamie's Italian restaurant. Ovation of the Seas has it all!

SHIP HIGHLIGHTS*

- Multiple dining options including Jamie's Italian, American Icon Grill, Coastal Kitchen, Chops Grill plus much more!
- More than 7 bars including the Bionic Bar powered by Makr Shkr®, multiple lounges and entertainment venues.
- North Star: Take yourself to new heights with the jewel-shaped capsule that gently ascends over 90 metres above sea level giving breathtaking 360° views of the sea.
- A choice of pools including an adults-only solarium pool - a glass canopied retreat.
- Indoor pool with retractable roof.
- A 67-metre outdoor poolside cinema screen .
- ..and much more!

*Some dining options and activities may incur an additional fee.

FAST FACTS

Maiden Voyage: 2016

Decks: 16

Staterooms: 2,091

Restaurants: 21

Pools: 2 indoor, 2 outdoor

Length: 347m / 1,138ft

Tonnage: 168,666 GRT

Cruising Speed: 22 knots



REGISTRATIONS & BOOKINGS

THE DETERIORATING PATIENT

Detection, Assessment and Treatment

We have selected a limited number of staterooms on board the ship in various categories. Choose an inside room for the best value, an ocean-view room for panoramic vistas, or indulge in a balcony room and relax in your own private sitting area.

Bring your family and friends! Guests who are not participating in the course only pay the cruise fare component!

Please refer to our website at
cruiseseminars.com.au
for pricing and availability.



Amedee Island, New Caledonia

REGISTER & BOOK IN 3 EASY STEPS

- 1 Visit Cruise Seminars at **cruiseseminars.com.au**
- 2 Locate the course in the **Events** menu then click the **Booking Request** button to enter your details.
- 3 You'll be contacted by Christie Gowan from **TravelManagers** to assist with your cruise booking. A separate invoice for the course will be provided which is payable when your final cruise payment is due.*

..OR SCAN TO BOOK!



Provided by

Cruise SEMINARS
cruiseseminars.com.au



RACGP
CPD Provider



Cruise bookings facilitated by

TravelManagers
As individual as you are



0407 626 480
Christie Gowan

*The cruise must be booked through Christie Gowan at TravelManagers. A separate invoice will be provided by Cruise Seminars for the course fee. Cruise cabins and seats in the course are limited and subject to availability. Terms and Conditions apply. Cancellation penalties may apply. Refer to website for details. Information in this brochure correct at time of publishing and is subject to change without notice.